



a xylem brand

Installation instructions

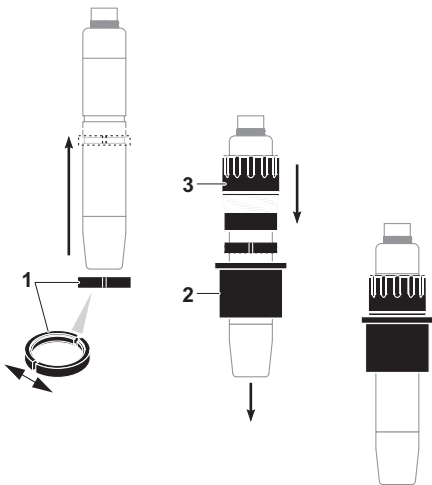
ADA-DF9/SW

Sensor adapter



Note

The sensor is fixed in the adapter with a retaining ring that catches in a groove on the sensor shaft. The position of the groove determines the position (penetration depth) of the sensor in the flow-through equipment. IQ SW sensors from production date approx. 05/2011 have a second groove. Thus the sensor can be mounted with two different penetration depths.



Assembly

- 1 Carefully spread the retaining ring (pos. 1) at the ring opening, slide it on the sensor shaft and make catch in the respective groove.
- 2 Insert the sensor in the sleeve (pos. 2) up to the stop.
- 3 Slide the coupling ring (pos. 3) onto the sensor shaft from the side of the plug head and screw it to the sleeve all the way.

The sensor is ready to be installed in the flow-through equipment (e.g. EBST-SW).

Technical data

| | |
|---------------------------|-----------------------------|
| Allowed temperature range | 0 ... 50 °C (32 ... 122 °F) |
| Allowed pH range | 4 ... 12 |
| Plastic parts | POM |
| O-ring | NBR |

Materials



a xylem brand

Installation instructions

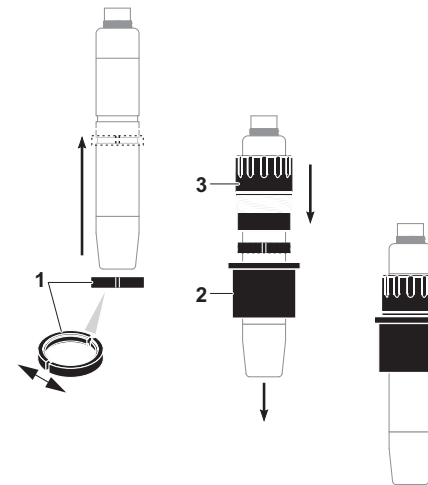
ADA-DF9/SW

Sensor adapter



Note

The sensor is fixed in the adapter with a retaining ring that catches in a groove on the sensor shaft. The position of the groove determines the position (penetration depth) of the sensor in the flow-through equipment. IQ SW sensors from production date approx. 05/2011 have a second groove. Thus the sensor can be mounted with two different penetration depths.



Assembly

- 1 Carefully spread the retaining ring (pos. 1) at the ring opening, slide it on the sensor shaft and make catch in the respective groove.
- 2 Insert the sensor in the sleeve (pos. 2) up to the stop.
- 3 Slide the coupling ring (pos. 3) onto the sensor shaft from the side of the plug head and screw it to the sleeve all the way.

The sensor is ready to be installed in the flow-through equipment (e.g. EBST-SW).

Technical data

| | |
|---------------------------|-----------------------------|
| Allowed temperature range | 0 ... 50 °C (32 ... 122 °F) |
| Allowed pH range | 4 ... 12 |
| Plastic parts | POM |
| O-ring | NBR |

Materials